

Data Execution Prevention

Symptoms

Carbon stalls while loading on the 'Sharpen' filter.

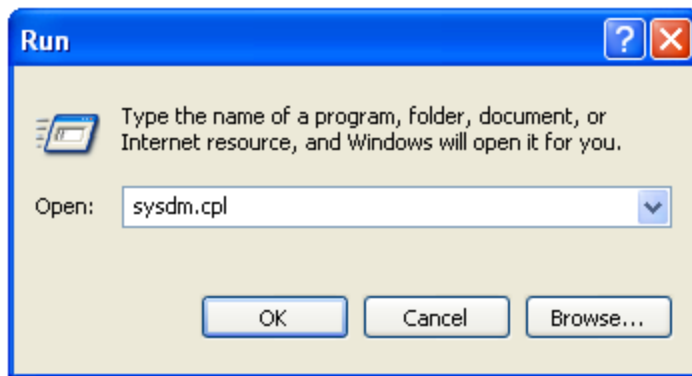
Introduction

When running Rhozet products on Windows 2003 Server, errors may appear when trying to launch applications. One symptom is the Rhozet application stalling on the message "Loading 'Sharpen' filter".

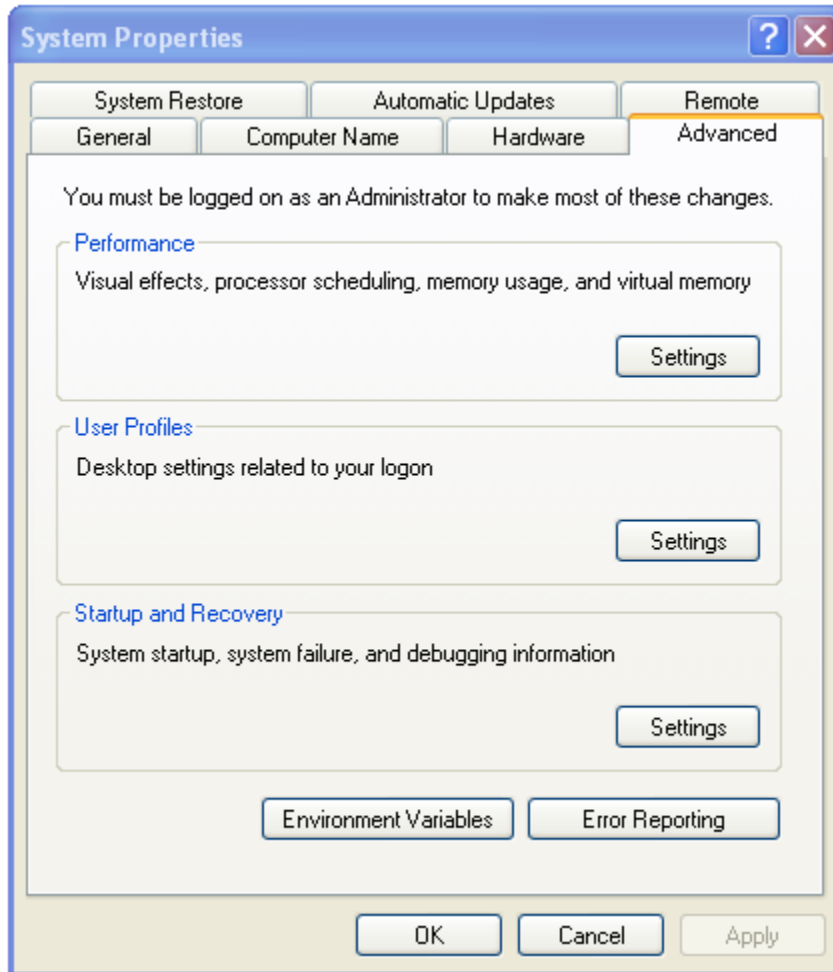
To solve this requires changing the Windows Data Execution Prevention (DEP) default setting; see the steps below how to set the DEP option.

Instructions

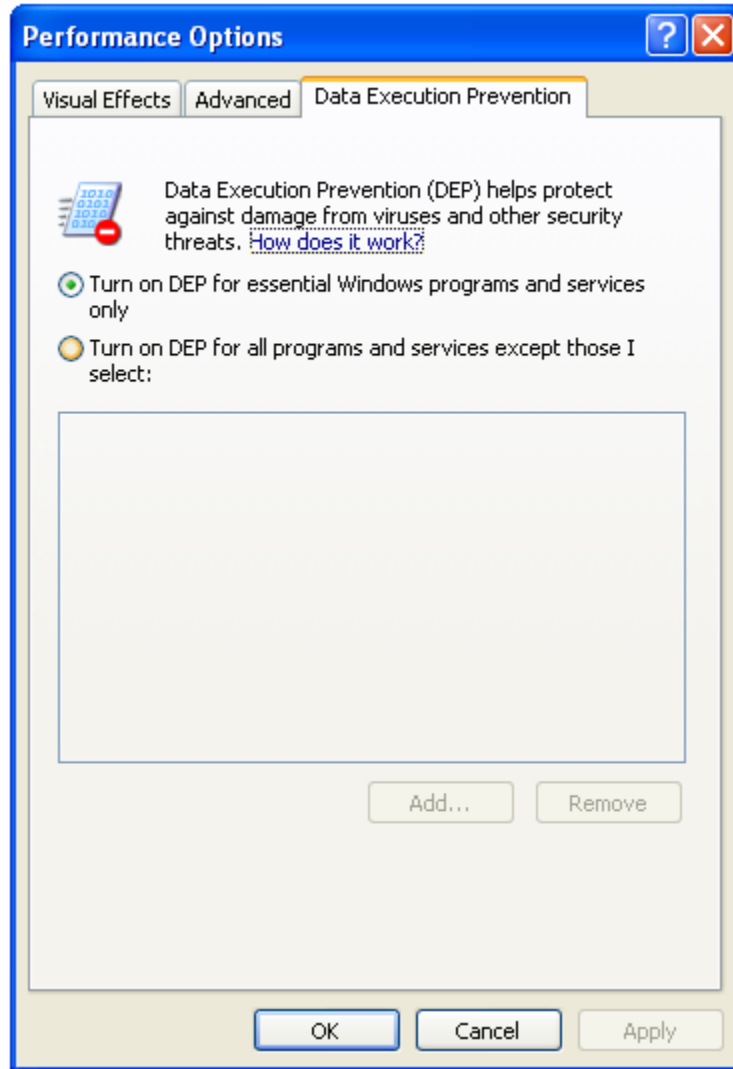
1. Click on "Start > Run," enter "sysdm.cpl," and click "OK" to open your System Properties dialog box.



2. Click on the "Advanced" tab.



3. In the "Performance" section click on the "Settings" button.
4. Click on the "Data Execution Prevention" tab.



5. Select the option "Turn on DEP for essential Windows programs and services only"
6. Click "OK" and exit the dialogs.